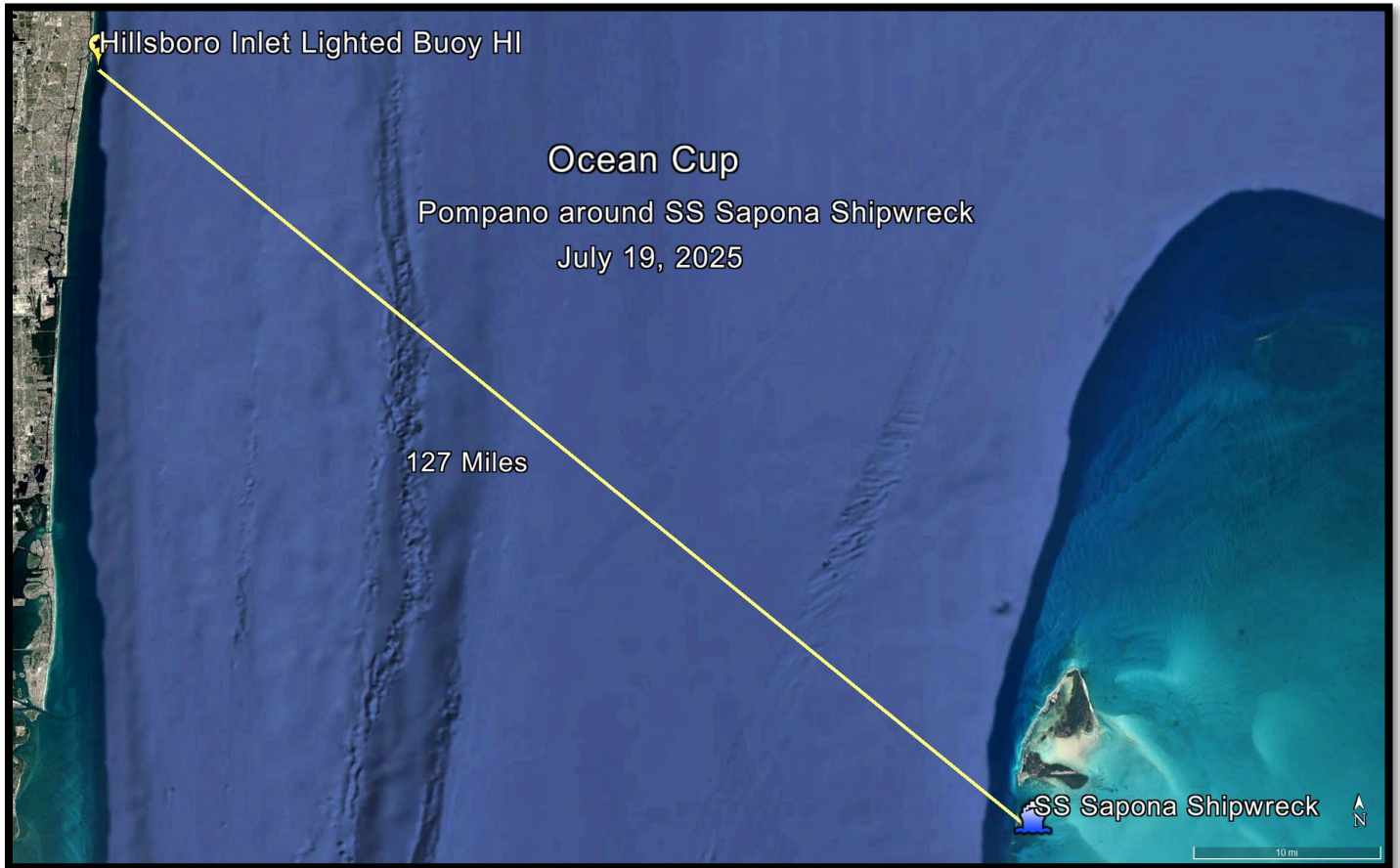


# 2025 Ocean Cup

## Pompano Beach, FL *around* SS Sapona Shipwreck, Bimini, Bahamas

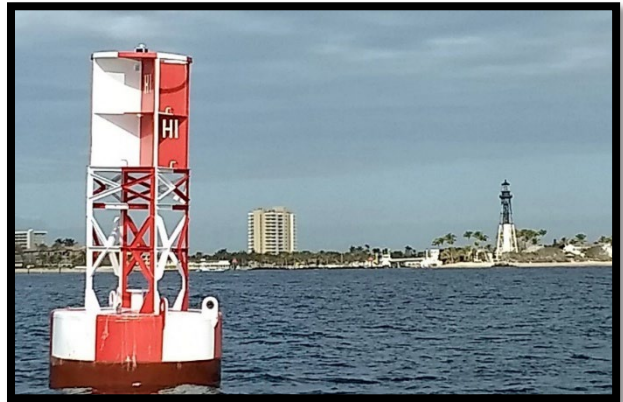
July 17-20, 2025



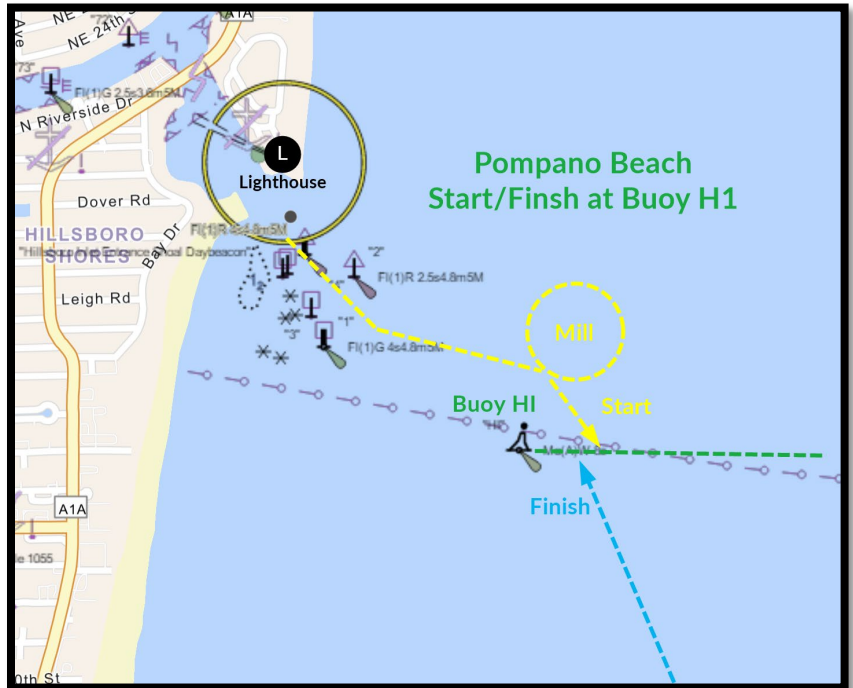
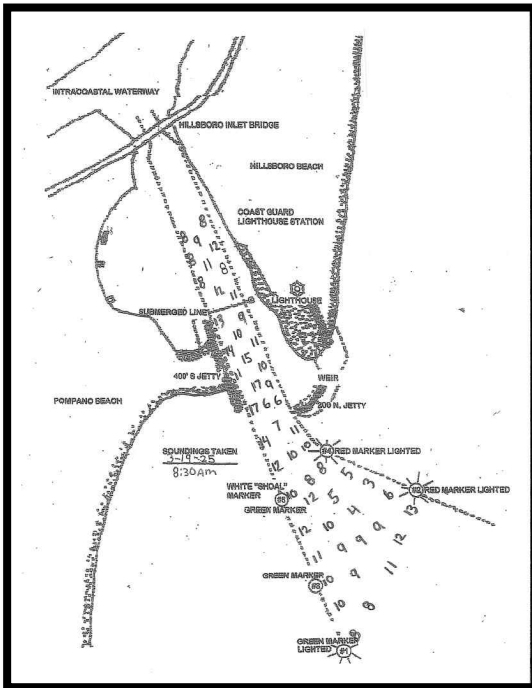
Start/Finish		and Coordinates	Distance	Description
Hillsboro Inlet Entrance Lighted Buoy H1	Start	26°15'8.33"N 80° 4'28.72"W	0.0	Keep Starboard
	A	25°38'50"N 79°17'42"W	63.0	Buffer Zone
SS Sapona Shipwreck (25°39'2"N 79°17'36"W)	B	25°39'13"N 79°17'29"W	0.5	
	C	25°39'13"N 79°17'29"W	0.5	
Hillsboro Inlet Entrance Lighted Buoy H1	Finish	26°15'8.33"N 80° 4'28.72"W	63.0	Keep Port
			<b>127.0 Miles</b>	
			<b>204.4 Kilometers</b>	
			<b>110.4 Nautical Miles</b>	

## Start & Finish in Pompano Beach Buoy HI - Hillsboro Inlet Lighted Buoy

The sea buoy, HI, is red and white, tall pillar shape located approximately 0.46 miles from the inlet.



START – Keep HI Buoy Starboard      FINISH – Keep HI Buoy Port



<https://www.nauticalcharts.noaa.gov/enconline/enconline.html>

Video of Hillsboro Inlet: <https://www.youtube.com/watch?v=HNZ1f7BsoKo>

Hillsboro Lighthouse Webcam Link:

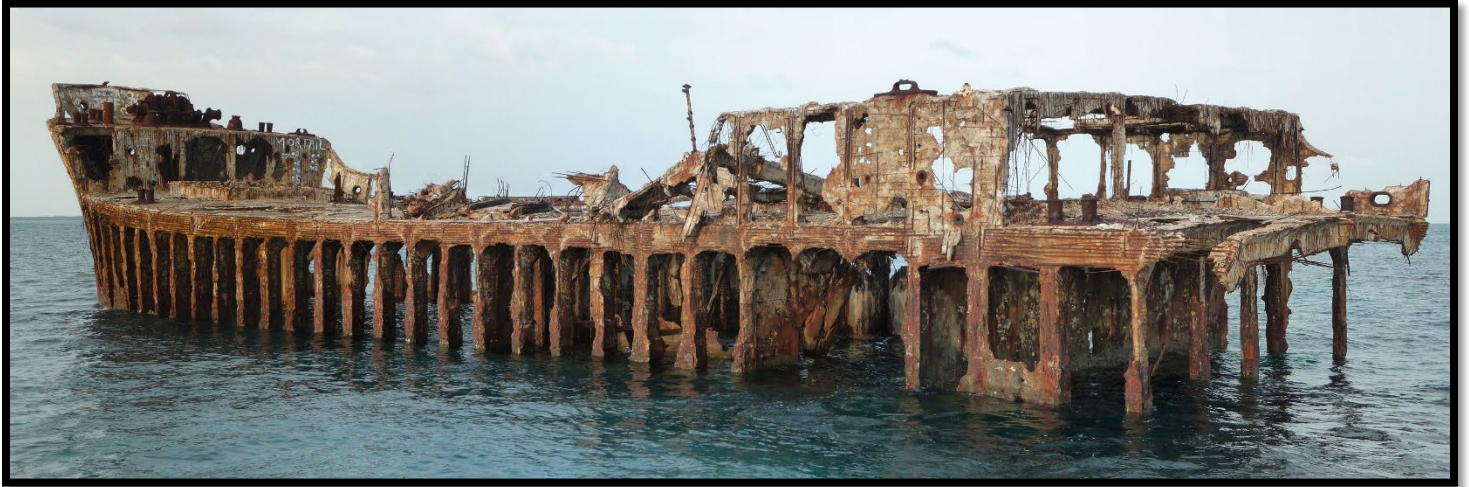
<https://www.hillsborolighthouse.org/south-cam>

<https://www.hillsborolighthouse.org/north-cam>

<https://www.hillsborolighthouse.org/inlet-cam>

## 63 Miles to Bimini's Concrete Shipwreck - SS Sapona Mandatory .25 mile buffer.

### SS Sapona Shipwreck



The wreck sits in 15 feet of water, just a few miles off Bennett's Harbour in South Bimini, and most of the concrete on the hull has now been worn away by the bombing and weathering.

[https://en.wikipedia.org/wiki/SS\\_Sapona](https://en.wikipedia.org/wiki/SS_Sapona)

**There is a .25 mile MANDATORY buffer zone around the Sapona Shipwreck.**



Video of Hillsboro Inlet: <https://www.youtube.com/watch?v=HNZ1f7BsoKo>